

THE ASSAM GAZETTE

অসাধাৰণ

EXTRAORDINARY

প্ৰাপ্ত কৰ্তৃত্বৰ দ্বাৰা প্ৰকাশিত

PUBLISHED BY THE AUTHORITY

নং 535 দিশপুৰ, মঙ্গলবাৰ, 16 নৱেম্বৰ, 2021, 25 কাৰ্ত্তিক, 1943 (শক)

No. 535 Dispur, Tuesday, 16th November, 2021, 25th Kartika, 1943 (S. E.)

GOVERNMENT OF ASSAM
ORDERS BY THE GOVERNOR

DEPARTMENT OF ENVIRONMENT & FOREST

PRELIMINARY NOTIFICATION

The 8th November, 2021

No.FRM.203/2017/83.- In exercise of the power conferred by Section 35 of Wildlife (Protection) Act,1972 as amended upto date, the Governor of Assam is pleased to declare its intention to constitute the area described in the Schedule annexed hereto as 10th addition to the Kaziranga National Park.

The Governor of Assam, further hereby appoints the Deputy Commissioner, Biswanath to enquire into and determine the existence, the nature and extent of any rights/claims alleged to exist in favor of any person or persons, in or over any land within the limit described in the Schedule below. The enquiry into the above will be as per procedure laid in the section 19 to 26-A (both inclusive except clause (c) of sub-section (2) of section 24) of the Wildlife (Protection) Act, 1972 read with section 35 of the said Act.

SCHEDULE A

LOCATION

District (Civil)	Biswanath
Subdivision (Civil)	Sadar
Name of the Forest Division	Biswanath Wildlife Division, Biswanath Chariali
Name of the Range	Central Range, Biswanath Ghat
Area	452 ha
Name of the area	10 th Addition to Kaziranga National Park

SCHEDULE B

1. **Wildlife:** The extensive riverine landscape proposed as the 10th addition to Kaziranga National Park is used by resident and migratory mega herbivore such as Asiatic Wild Buffalo, Rhinos, Elephants & Tigers among others. Deer, hare, turtles, snakes, wild pig and many species of local and migratory birds are also present in the region.
2. **Biodiversity and Conservation Significance:** The proposed 10th addition to Kaziranga National Park act as an important habitat and highland refuge for wildlife present in the 6th addition to Kaziranga National Park.
3. **Map:** A map of 10th addition to Kaziranga National Park s attached herewith as ANNEXURE-I.
4. **Area:** The Area of the proposed 10th addition to Kaziranga National Park is 4.52 square kilometers (Approx.)

5. BOUNDARY DESCRIPTION

East: It starts from the south-east corner of Monabari afforestation centre at coordinates 26°44'35.09"N latitude & 93°16'56.97"E longitude at the border of the 6th Addition to KNP and runs along the boundary of Monabari Plantation in eastward direction up to coordinates 26°45'9.51"N latitude & 93°17'2.76"E longitude and then runs eastwards up to coordinates 26°45'9.21"N latitude & 93°17'11.88"E longitude. After that it again runs in a northwestward direction until it reaches coordinates 26°45'21.70"N latitude & 93°17'7.29"E longitude.

North: The northern boundary runs from coordinate 26°45'21.70"N latitude & 93°17'7.29"E longitude in a northwest direction till it reaches coordinate 26°45'40.04"N latitude & 93°16'27.16"E longitude. Then it runs in a westward direction till it reaches coordinate 26°45'36.06"N latitude & 93°15'46.91"E longitude.

West: The western boundary runs from coordinate 26°45'36.06"N latitude & 93°15'46.91"E longitude in a southwest direction till it reaches coordinate 26°45'1.38"N latitude & 93°15'22.02"E longitude and from there, it runs in a southeast direction till it reaches coordinate 26°44'55.17"N latitude & 93°15'25.37"E longitude. From there, it again moves in a southwest direction till it again meets the northern boundary of the 6th Addition to KNP at coordinate 26°44'45.13"N 93°15'20.05"E.

South: The southern boundary runs along the north bank of the Brahmaputra River following the northern boundary of the 6th Addition to Kaziranga NP from coordinate 26°44'45.13"N latitude & 93°15'20.05"E longitude and 26°44'35.09"N latitude & 93°16'56.97"E longitude at the south-east corner of Monabari afforestation centre.

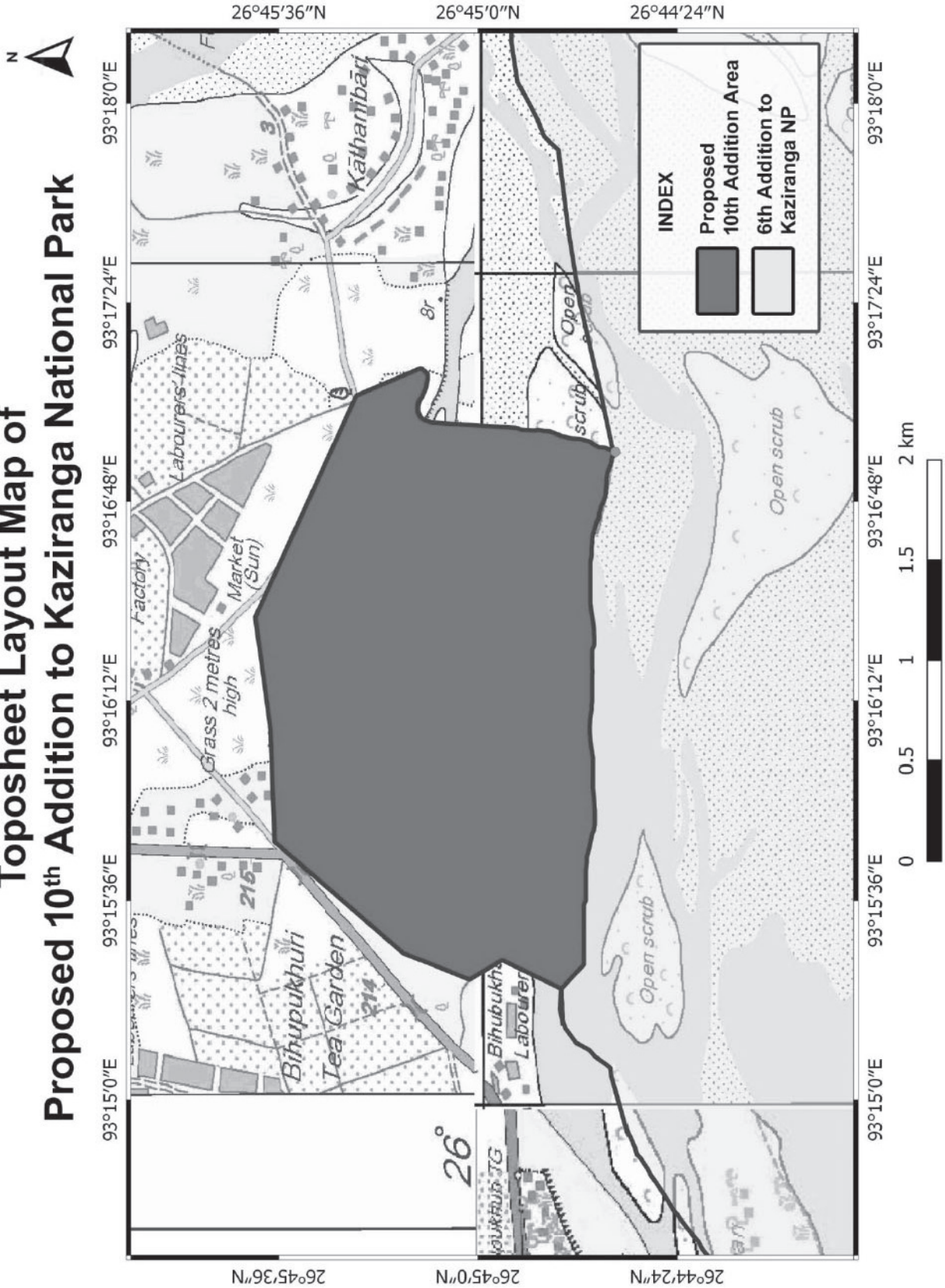
Coordinate list is attached as Annexure II.

G. D. TRIPATHI,

Commissioner & Secretary to the Government of Assam,
Environment and Forest Department.

ANNEXURE I

**Toposheet Layout Map of
Proposed 10th Addition to Kaziranga National Park**



ANNEXURE II**GPS Points of Ground Control Points (GCP) of Boundary Coordinates of the Proposed 10th Addition to Kaziranga National Park**

Point ID	Latitude	Longitude
1.	26°44'2.35.09"N	93°16'56.97"E
2.	26°45'9.51"N	93°17'2.76"E
3.	26°45'9.21"N	93°17'11.88"E
4.	26°45'21.70"N	93°17'7.29"E
5.	26°45'40.04"N	93°16'27.16"E
6.	26°45'36.06"N	93°15'46.91"E
7.	26°45'1.38"N	93°15'22.02"E
8.	26°44'55.17"N	93°15'25.37"E
9.	26°44'45.13"N	93°15'20.05"E